

# LCD MONITOR / 8 CHANNEL DVR COMBO

## Overview - Video Playback



**SERIES:**  
**SG17LD800 & SG19LD800**

 **LOREX**<sup>®</sup>

[www.lorexcctv.com](http://www.lorexcctv.com)

Copyright © 2007 LOREX Technology Inc.

## Video Playback - Overview

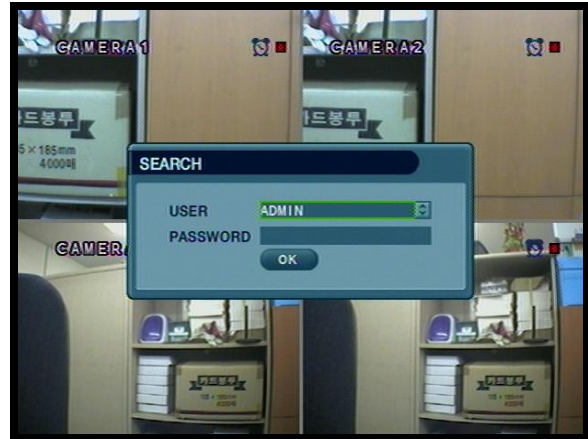
How do I playback Previously Recorded Data? .....	3
Search By Time .....	3
Search By Event .....	4
Playback and Navigation Controls .....	4

If you have any additional questions or technical issues, please contact the Sentinel CCTV Help desk for further assistance at 1-888-425-6739 (Option 1 - 1) or mail your questions to [support@strategicvista.com](mailto:support@strategicvista.com)

## How do I playback Previously Recorded Data?

Search mode allows you to locate previously recorded video by Date and Time, or by Event Type.

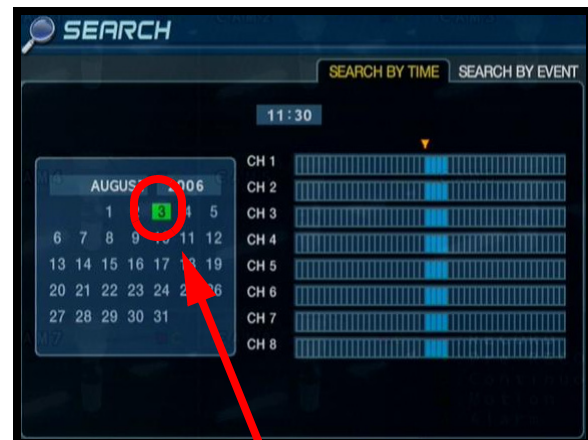
- Press the Search Button on the front panel or Remote Control
- Enter the User Name and Password (if required).
- Use the Left / Right arrows on the Front Panel or Remote Control to switch between the Search By Time and Search By Event screens.



### Search By Time

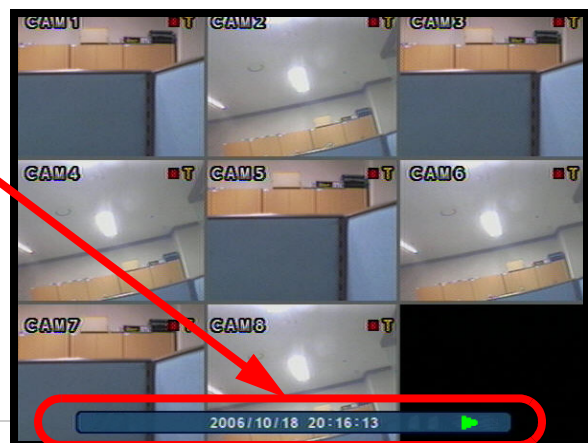
Searches the system based on date and time.

- Press the Enter button to access the Calendar (on the left side of the screen). Press a second time to change the highlight to white.
- Navigate within the calendar using the Arrow Keys on the front panel or remote control.
- Once the date has been located, press the Enter button to accept the date, and to access the Time Search (on the right side of the screen).
- Press and Hold the arrow keys to select the Time (increments of 15 minutes). Pressing the button without holding will increment 1 minutes.
- Press the Enter button to start the playback. Press the Return button to stop playback and return to the Search By Time screen.



Any days highlighted with GREEN indicate that there is recorded video data.

The Date and Time will be displayed at the bottom of the screen. A playback icon will appear indicating that the unit is in Playback mode.

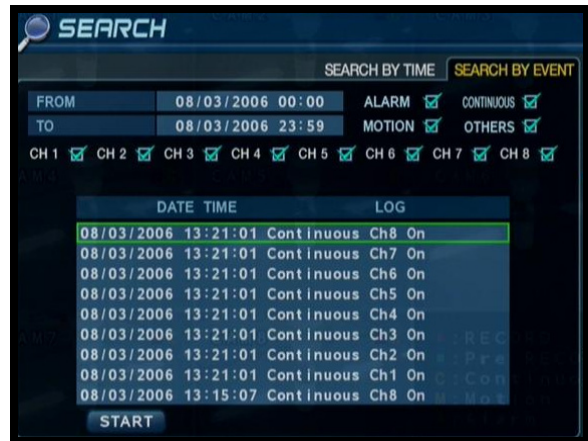


**NOTE: The unit will continue to record data while in Playback Mode.**

## Search By Event

Searches the system based on Event Type (Alarm, Motion, Continuous or System).

- Press the right arrow button on the front panel or remote control to access the Search By Event screen.
- Select From and To dates, Events (Alarm, Continuous, Motion and Other) and Cameras
- Navigate within the options using the Arrow Keys on the front panel or remote control. Press the Enter button to select or deselect options (Note: Multiple event types can be selected).
- Navigate to the Start button at the bottom of the screen and press the Enter button. A listing of events will be displayed.
- Navigate to an event, and press the Enter button to start the playback. Press the Return button to stop the playback and return to the Event Search screen.



## Playback and Navigation Controls



Navigation Controls - Move Up/Down/Left/Right



Play Button - Normal Speed Playback



Reverse Playback Button - Normal Speed Reverse Playback



Pause Button - Pause the onscreen Playback. The Fast Forward and Reverse playback buttons can be used while the video is paused to move to the Next / Previous frame.



Fast Forward Button - Fast Forward the current video (2~64 Speed)



Rewind Button - Reverse playback of the current video (2~64 Speed)



Enter Button - Used to set options ON/OFF, and to start playback



Return Button - Used to stop playback, and exit menus and search mode.

# It's all on the web

 **Product Information**

 **Specification Sheets**

 **User Manuals**

 **Software Upgrades**

 **Quick Start Guides**

 **Firmware Upgrades**



**VISIT**  
**www.lorexcctv.com**

[www.lorexcctv.com](http://www.lorexcctv.com)

Lorex Technology Inc.

